



Rustic

# ELEGANCE

A romantic riverside escape for your entire wedding party

## Sweet Water Hollow

We have created a rustic yet elegant experience with unique vintage style, old western buildings, a wonderful natural amphitheater and rustic accommodations on the banks of the Salmon River. The main lodge includes a classic western bar, lounge and enormous deck with views of the Beaverhead Mountains. The surrounding grounds provide nooks for great conversation, a secluded riverside ceremony, a bar, stage, dance floor and amphitheater for a great party.



### A great location.

Part of what makes Sweet Water Hollow so convenient is the proximity to downtown, hotels and restaurants. We provide a short list of preferred vendors, recommendations for eating, shopping and getting outdoors. From hot springs, day floats, and downriver whitewater to antique shops and an amazing museum pack with antiques, there is plenty to keep everyone entertained. Keeping your wedding party and guests close to the venue also provides the added safety of being within walking distance after the big party.

As hosts, we provide resources, knowledge and assistance to you both in the planning stages and throughout your event to make your weekend perfect.





# Complete Venue Amenities

## Sweet Water Lodge

- Elegant Bar & Lounge
- Commercial Kitchen & Appliances
- Oversized Covered Deck with Gas Fireplace
- Bridal Shower & Dressing Room
- 2 Stunning ADA & 2 Standard Bathrooms
- Laundry Room
- WiFi, Smart TV, Netflix
- Surround Sound System (indoor & outdoor)



## Full Commercial Kitchen

- 6 Burner Gas Stove with Oven
- Giant Cooler (Pizza Prep Station)
- Pans, Sheets, Cookware and Kitchen Utensils
- Serving Trays and Bussing Tubs
- Appliances: Microwave, Kitchen Aid Mixer, Blender, Cuisine Art, Grinder, Small Mixer, SouVide, 2 Crock Pots, 2 Large Event Roasters, 50 Cup Rice Cooker, Fryer(sm), Wok and Meat Slicer.
- Upstairs Bar Kegerator
- Wine glasses 150, Pint Glasses 250, & Pitchers
- Vintage China Plates & Dinnerware for 200
- Filtered Water and Berkey Water Dispenser
- Coffee & Breakfast Bar; Coffee, Tea, Honey, Sugar, Hot Cocoa, Creamer, Oatmeal, Juice, & Eggs.
- 3 Basin Sink, Dishwasher & 2 Additional Sinks



## Downstairs Patio Bar (main bar)

- 6 Tap Main Kegerator (downstairs patio bar)
- Freezer (for ice or frozen items)
- Bartender Tools
- Ice Water & Lemonade Dispensers
- Wedding Decor Cabinet & Tablecloths



## Outdoor Grounds & Amphitheater

- Covered Stage (20x25 ft)
- Complimentary Sound System Package; (2 high quality speakers and microphone)
- Beautiful Outdoor Edison Lighting Design
- Riverside Wedding Site and Rustic Arch
- Covered Pavillion (18x28ft)
- Mahogany, padded Event Chairs (225)
- Special Event Tables (6ft, circular - 17 tables)
- Rectangular Tables (3-8ft, 8-6ft folding tables)
- 3 Outdoor Propane Heaters & Propane
- 4 Fire Pits & Firewood
- Games; Horse Shoes, Corn Hole, Spike Ball





# Services & Upgrades

## Bartenders & Servers

Professional bar tenders and servers are a great way to assure your party flows smoothly without the help of your guests. \$25/hr, 3 hrs min shifts.



## Beer, Wine, Liquor Cantail Orders

We have an amazing selection of in-house beer, wine and liquor cantails and non-alcoholic drink options for your guests. Our bulk pricing allows you to take advantage of delivery onsite and ready to drink as well as buy-back options so you can order worry free about having to many leftovers.

## White Canvas Event Tent: \$700

- 20 ft x 40 ft.
- Includes set-up, take down, and Edison lights
- Recommended for large parties 150+ or those expecting weather.

## Outdoor Dance Floor (20x25)

Please ask for details as we are upgrading our outdoor dance floor.



## Giant Kids Splash Park: \$150

Includes set-up and take down (Ages 3-12 yrs)



## Sound, Light & Production Upgrades

### **The Big System & Sound Tech: \$400**

This package includes a professional pair of large amps set up in addition to dual speakers on the stage following your ceremony. The amps provide additional base and volume for larger wedding parties and those anticipating a guest list that will want to DANCE. This package includes a staff member to both set up and take down after your main event or in the case of weather.

### **Full Production Sound System & Additional Stage/Dance Floor Lighting: \$1,000**

This package includes sound at the ceremony site, sound check on Saturday, large amps, oversized speakers, multiple mics, and additional stage and dance floor lighting. Package includes a professional sound tech to work with musicians and take down for everything at the end of the event. This package is ideal for live music (bands).

### **Friday Sound Rehearsal: \$100**

## Set-Up & Decoration Packages

### **The "Heavy Lifting" Set Up Package: \$400**

Includes set up for outdoor tables & chairs for dining, chairs arranged at ceremony site in arrangement determined by you, bar set up and decor, entry gate decor, welcome table display, and 2 photo op sites with couches, rugs and decor in lower amphitheater. This package is intended to help your crew with all the heavy lifting before they come in to work on tablecloths, centerpieces and any additional decorating you choose to do.

### **Elegant Wedding Arch Decorating: \$200**

This package includes local fresh flowers, cuttings and arrangement with additional Sweet Water decor and tea lights at the ceremony site. Flower arrangement types will be based on blooming flowers available for specific times of year.

### **Tablecloths, Dinner & Centerpieces: \$400**

Includes tablecloths dressed on outdoor dining tables and food serving tables, local flower bouquets arranged on each table, log rounds, tea lights, dinnerware (vintage china plates, pint glasses, silverware, paper napkins, and ice water/lemonade stand at downstairs bar. **\*Add-on: Napkin Wrapping \$100 (150 sets).**



# Ceremony Sites & Decor

We provide beautiful grounds, the resources and decor to not only make your weekend special but to make it your own style without packing your whole kitchen sink to the venue. If you think you would like additional assistance or staff please refer to our Set-up Packages and our Welcome Guide which provides resources for Wedding Planners, Caterers and more.

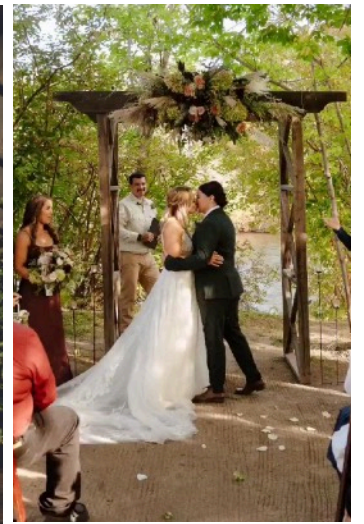
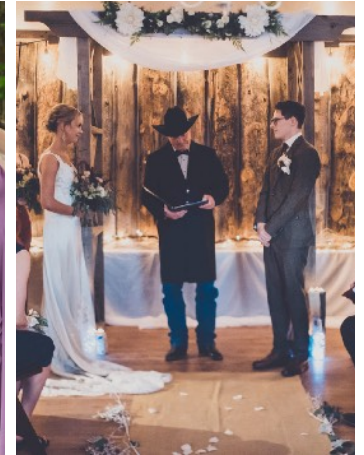
## The Ceremony

We have many sites that are great for ceremonies and photo shoots based on the time of year, size and style of your wedding.

- Riverside Sand Island & Rustic Wedding Arch
- Rustic Stage
- Indoor Ballroom

## Decor & Resources

- Edison Lighting & Fairy Light Strings
- Wedding Decor Closet with tools, wire, twine and cutters.
- Drapery options; Chiffon, White Silk, Ivory Linen & White Lace
- Easels (large & small)
- Centerpieces; Vases, Mason Jars, Ribbon, Wood Rounds, & Tea lights
- Other Decor; Lanterns w/Candles, Vintage Buckets, Standing Tea Light Holders, Lace Tablecloths, Chalkboard Signs, Dried Flower Bouquets, Vintage Metal Buckets, Vases & Decorative Trays









## Onsite Accommodations



### Great Lodging for Added Value.

Providing lodging for some of your wedding party can be both a gift to your close friends and makes it much easier to spend more quality time with the ones you love. These complimentary lodging options are comfortable and unique with decor and amenities that feel like rustic royalty. In total, there are 6 queen beds with all cabins and cabanas hosting 1 queen except the Bunkhouse which has 2 queens.

### The Bunkhouse.

The Bunkhouse is perfect for your bridesmaids, your friends with children, your parents or your own wedding night suite. It offers privacy, convenience and comfort right onsite with its own coffee bar and full length mirrors for the big day.

- Two Queen Beds
- Private Shower & Bathroom
- Private Kitchenette (Oven & Refrigerator)
- Coffee Bar
- Air Conditioning, Wood Stove and Infrared Heaters
- Rustic Western Style
- Pet Friendly



### The Cottage Cabin.

- Quality Queen Mattress
- Power and Electric Heat
- Water Dispenser and Mini Fridge
- Shared bathroom and Shower Facilities
- Private Off-Highway Parking
- Located on Main Level near Bunkhouse Cabin.



## The Historic Cabin.

- Quality Queen Mattress
- Power and Electric Heat
- Water Dispenser and Mini Fridge
- Shared bathroom and Shower Facilities

## The Beachside Cabana.

The Beachside Cabana is situated on the banks of the Salmon River. Watch the sunrise after a blissful sleep in our beautiful wall tent with plush queen bed and Sweet Water Hollow's amenities.

- Quality Queen Mattress
- Solar Lights
- Water Dispenser
- Shared bathroom and Shower Facilities

## The Riverwalk Cabana.

The Riverwalk Cabana is situated upstream from the main ceremony site and also right on the bank of the Salmon River. This cabana offers excellent mattress, and fine linens as well as a private sitting area inside and outside the living space. Falling asleep to the river in these digs is amazing.

- Quality Queen Mattress
- Solar Lights
- Water Dispenser
- Shared bathroom and Shower Facilities



# CLEANING CREW PACKAGES

While we offer you the opportunity to take on more responsibilities yourself to make your event as affordable as possible, we do offer Cleaning Crew Packages to those wanting a more all-inclusive service.

## **Your basic responsibilities without a Clean Crew Package;**

- Replace lodge chairs and tables to original arrangement.
- Replace outdoor folding chairs and tables to their storage locations.
- Pull all used tablecloths and place in provided black sacks and leave in laundry room.
- Remove all trash, micro trash, food and drinks from all coolers and refrigerators.
- Sound equipment should be restored to its original location (Historic Cabin) at the end of the night or if poor weather should occur.
- Turn off all indoor and outdoor string lights, heating, fireplaces at the end of each night.
- Main Bar downstairs should be wiped down, drink dispensers washed and coolers rinsed out.
- Dishes should be left clean and drying or stacked in kitchen or bar.
- Kitchen surfaces should be wiped down with provided towels and cleaning supplies.

## **Basic Tear Down Service Package; \$400.**

This package takes place after checkout. Our staff will return all outdoor event tables and chairs to storage and will restore furniture to its original location. Staff empties all trash cans, collects micro-trash, and puts away all your dishes you have left clean in the kitchen, wipes down kitchen and bar areas and cleans out coolers and drink dispensers. \*Please note; Your party is responsible for washing dishes, removing all food and beverages as well as taking down decorations before checkout. You will also be responsible for unplugging all outdoor lighting and turning off lights at the venue at the end of each night.

## **Full Service Cleanup Package; \$700**

1. A general resetting of lodge, bar, kitchen and bathrooms Saturday mid-morning prior to the main event.
2. A general resetting of lodge, kitchen/dishes, bathrooms, deck Saturday evening and early Sunday to ensure a clean facility and smooth transition between Saturday's main event and Sunday's Farewell Breakfast. Dishes, Kitchen and Bathroom Reset is generally started Saturday evening after dinner service and plates are brought to the kitchen. Saving leftover food items will remain the renter's responsibility.
3. We will take down any decorations left onsite including centerpieces, ceremony site, bar, etc including micro-trash and dog waste.
4. We will dispose of all food and beverages left in coolers or refrigerators.
5. All Basic Tear Down Service Package duties including all outdoor chairs, tables,
6. furniture, trash, coolers and drink dispensers.
7. Staff will turn off lights, heating, and fireplaces both rental nights.

*\*This package makes check-out a breeze on Sunday with no responsibilities to interfere with having a great goodbye with friends and family or a fast getaway.*

## **The "Party with Confidence Multi-Day Cleaning" Package: \$900.**

1. Cleaning staff resets kitchen, lounge, bathrooms and downstairs bar each morning and evening on (Friday, Saturday & Sunday) including washing dishes left in kitchen.
2. Our staff then returns after checkout the afternoon of your final day for a Full Service Clean-up (see above).
3. \*If you are expecting 150 guests or more and will be using the kitchen, our china and dinnerware sets on Friday for rehearsal and Saturday for the reception, this is a great package to ensure you don't ever have to do dishes and the venue is ready for your guests each day.



## Adjacent Airbnb Lodging

### Skylight Vacation Suite: \$145/night

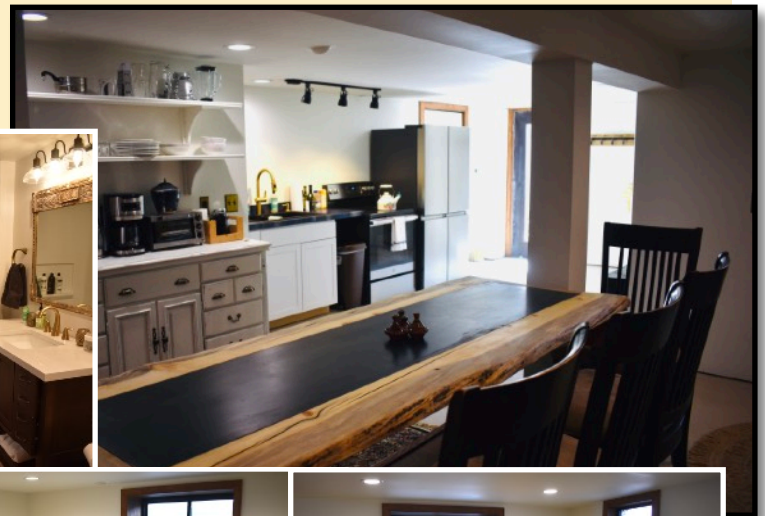
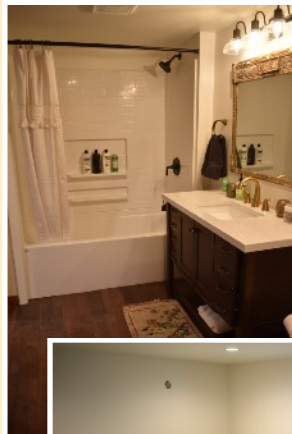
- One Bedroom with a King Bed
- Private Master Shower/Bath & 1/2 Bath
- Large Living/Dining Room
- Queen futon
- Full Kitchen & Coffee Bar
- Deck & Grill
- Private Washer/Dryer
- \$50 cleaning fee (refunded if booked 3+ nights)

• [www.airbnb.com/rooms/44431135](http://www.airbnb.com/rooms/44431135)



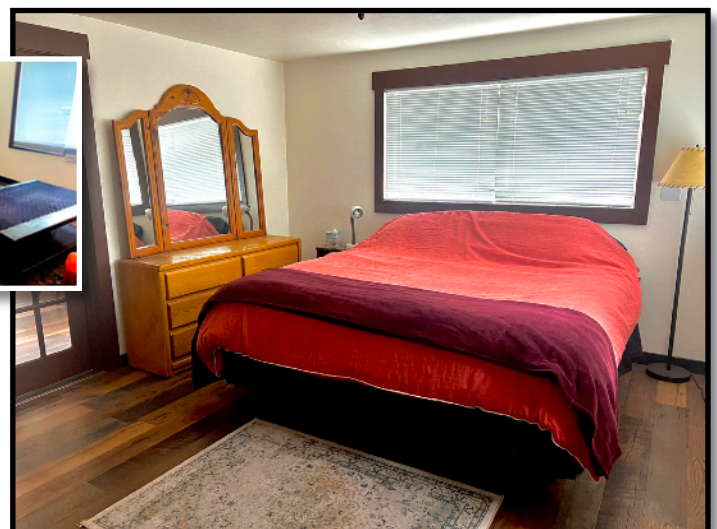
### Speakeasy Vacation Suite: \$185/night

- 3 Bedroom, 1 bath basement apartment
- Bedroom 1: King Bed
- Bedroom 2: King Bed
- Bedroom 3: 1 Full Bed, 1 Twin Bed (bunks)
- Full Kitchen, Living Room & Kitchen Dining
- One Bathroom with Bathtub
- Coffee Bar
- Smart TV, wifi
- Shared Washer/Dryer
- Outdoor Grill
- \$50 cleaning fee (discounted for bookings of 3 nights or more)



### The Traveler Suite: \$155/night

- 1 Bedroom with a King Bed
- Living Room, Smart TV, Wifi
- 1 Full Pull-Out Couch
- Private Bath/Shower
- Small kitchenette & Coffee Bar
- Gas Fireplace, Electric Heat, AC
- Front Porch Seating and Gas Grill
- \$50 cleaning fee
- Shared Washer/Dryer
- \$50 cleaning fee (discounted for bookings of 3 nights or more)





## Book Your Special Date

### Premier Wedding Weekend Package (3 days, 2 nights)

To reserve your date we require a 50% down payment. The final balance of your venue rental amount is due 2 months prior to event date and will include all upgrades and services. Any last minute additions for staff, drinks or Airbnb lodging will be due at check-in.

**Price;** All inclusive, 3 Days and 2 nights with Full Lodging Accommodations for 6 couples; \$3,600.

**Reservation Times;** Your rental begins at 10AM on Friday morning and checkout is normally scheduled for 4PM Sunday.

**Cancellations;** Please see our cancellation policy in our SWH Rental Agreement.\*All Prices are subject to Idaho Sales Tax (6%)

**Payments;** We are happy to accept all forms of payment including; check, money orders, Zelle, Venmo, Cash and CC. We do charge a 3% convenience fee for all credit card or debit card charges. Please see mailing address below.

### **SWEET WATER HOLLOW**

Owner Contact: Amy Tonsmeire, 208.940.0320

Manager Contact: Ani Love, 208.993.9963

[www.sweetwaterhollow.com](http://www.sweetwaterhollow.com)

[info@sweetwaterhollow.com](mailto:info@sweetwaterhollow.com)

Fb: swhidaho

Instagram: Sweet Water Hollow

### **Mailing Address:**

317 Riverfront Drive, Suite C

Salmon, Idaho 83467